

K4 Tank Washing Nozzle- 6160 Type 10250 Type

Design features

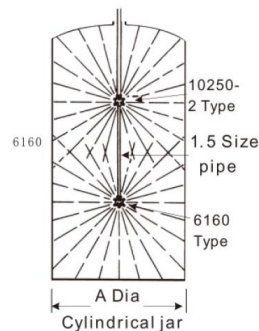
The 6160 fixed tank washing nozzle assembly features a large flow capacity for cleaning tanks up to 3.1 meters in diameter .

The flow rates can be changed by using the size of 1/4" or 1/8" full cone spray nozzle .The 6160 nozzle can pass through tank mouth of 130mm of large in diameter .

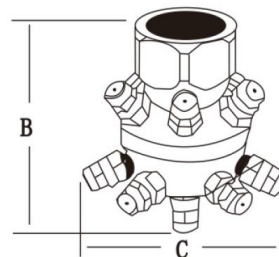
For cleaning large tanks where extra-large flow capacity is use to clean the tank which diameter reaches 6.7 meter. It uses size of 1/2", 3/4 "or 1" full cone to change the flow rates

The 10250-1 nozzle assembly can pass through tank mouth of 230mm in diameter .For deep tanks the 10250-1 version is available with a 1.5 inch bottom outlet connection for use with a pipe extension and a 6160 nozzle assembly.

6160 Type



10250 Type



On Application

- Washbox defoaming
- Stock tank cleaning

Performancedata

Pipe Size NPT or BSPT (Female)	Nozzle in the first order number	Flow rate (l/min.) at diferent pressures & Aprox. Max. Tank Dia								Tank dia A (m)	Size	
		1.5 Bar		2 Bar		3 Bar		3.5 Bar			Height B (mm)	Dia C (mm)
		l/min	diameter jar A (m)	l/min	diameter jar A (m)	l/min	diameter jar A (m)	l/min.	diameter jar A (m)			
3 Inch	10250-1-1/2	280	3.0	320	3.5	390	3.5	415	4.5	166	191	
	10250-1-3/4	580	3.5	660	4.0	800	4.5	860	5.0	174	210	
	10250-1-1	1000	4.0	1130	5.0	1370	6.0	1470	6.5	183	229	
1 ½ Inch	6160-1/4GG5	35		40		48		52		1.2	114	114
	6160-1/4GG10	70		80		97		104		2.1	114	114
	6160-1/4GG22	155		177		215		230		3.0	121	127